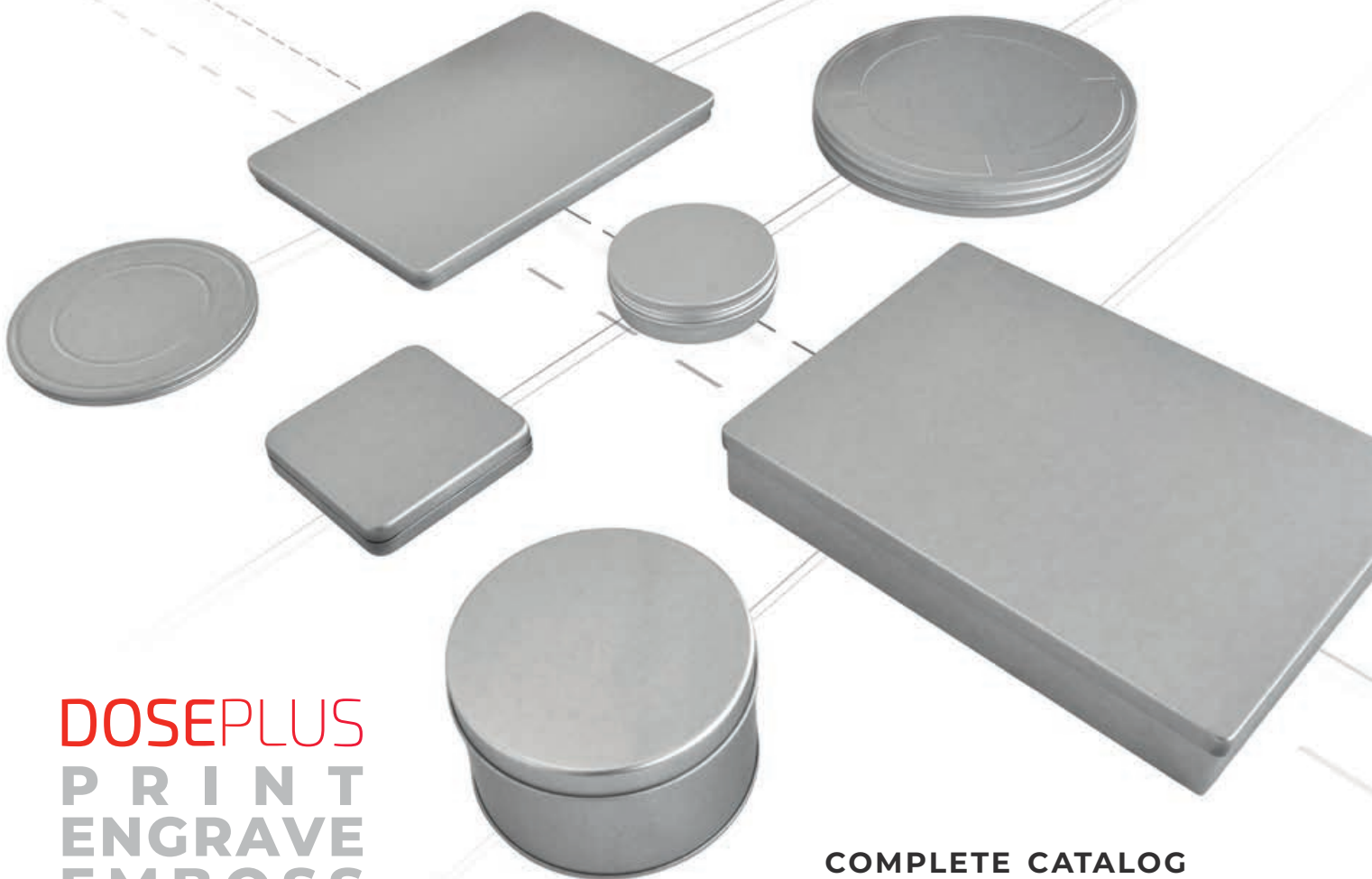


DOSEPLUS

TINPLATE PACKAGING

High-quality packaging for
your brand, your customers,
your products.

2025



DOSEPLUS
PRINT
ENGRAVE
EMBOSS

COMPLETE CATALOG
STOCK RANGE

FINISHING

Product labeling

Cost-saving alternative way to printing for round and rectangular tins.



Finishing starting from 100 pieces. Less orders according to prior agreement.



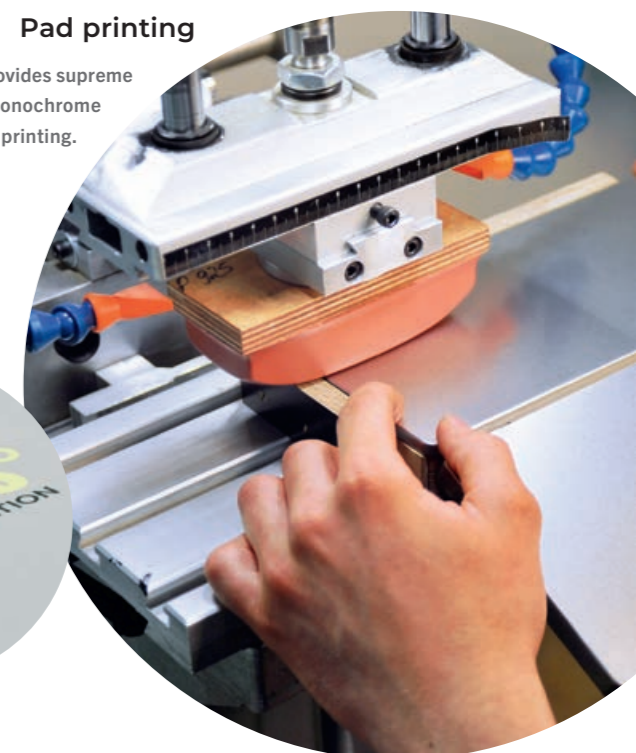
Embossing

Give your produkt a higher value with embossing.



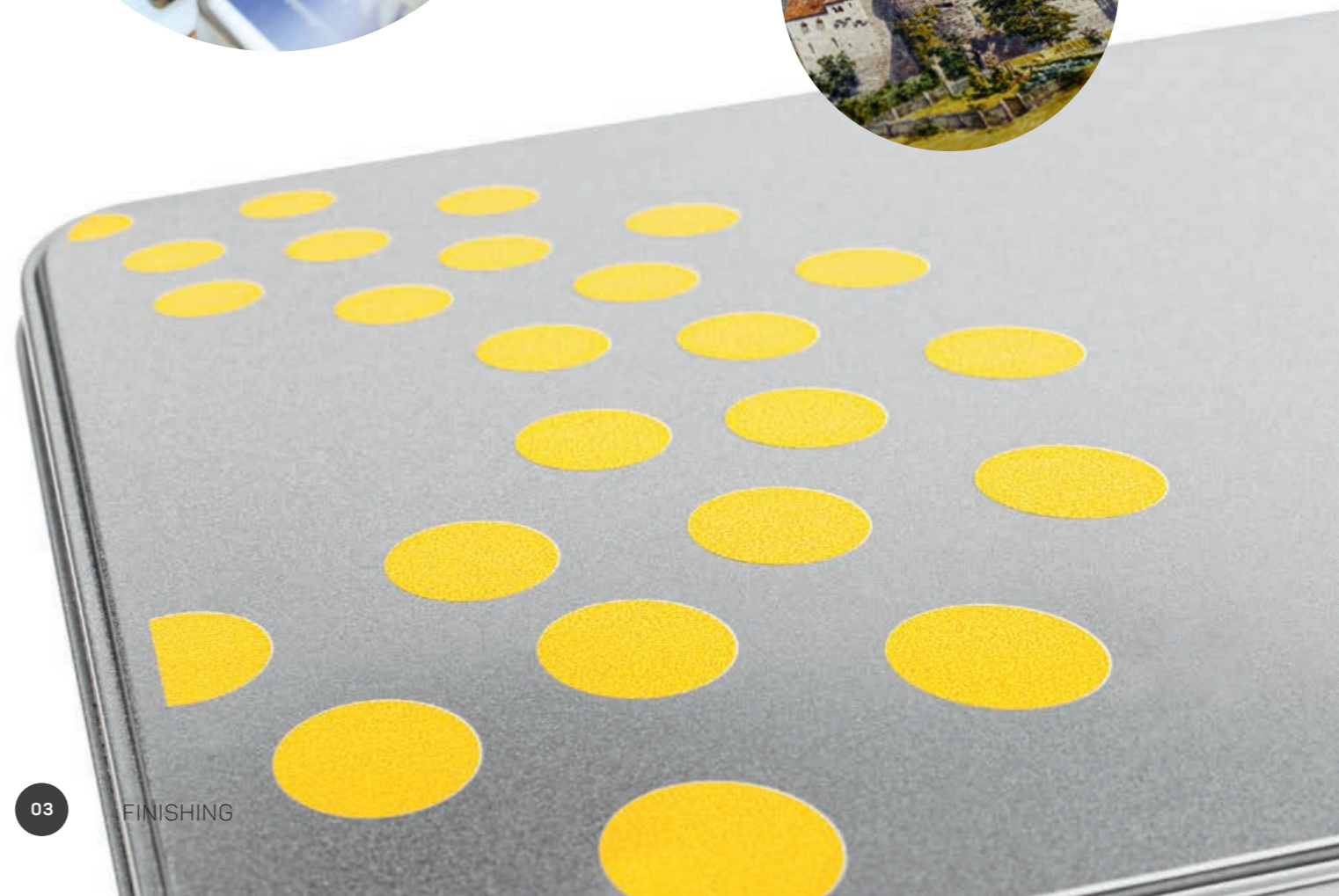
Pad printing

This method provides supreme quality for monochrome printing.



Digital printing

Whether photographic picture or logotype, our printing machines finish nearly any product. Even white colour printings are easily feasible.



FINISHING

Finishing starting from 100 pieces. Less orders according to prior agreement.



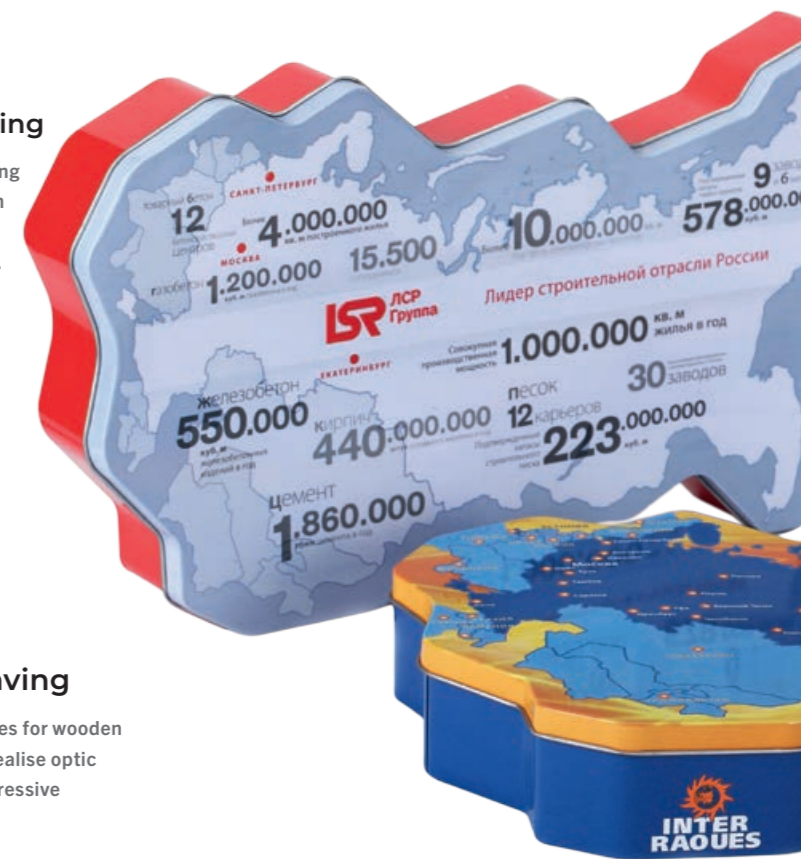
Laser engraving

For a precise, long-lasting labeling method with unmatched results we recommend the ND vanadate laser procedure, suitable for metal surfaces.



Offset printing

Photo-realistic offset printing pays off from 3000 pieces with four-colour printing and special colours such as Pantone.



CO₂ laser engraving

With our CO₂ laser machines for wooden and bamboo surfaces we realise optic and haptic effects with impressive accuracy.



SERVICE & EXPERTISE



Finishing of additional articles

We refine your additional products. Benefit from our vast experience.



Handling

Assembling, packaging, shipping: You decide on the extent of our services in an applicable way.



Warehousing

Use our company-owned storehouse your goods and ship it just in time with more favourable conditions.



FOAM

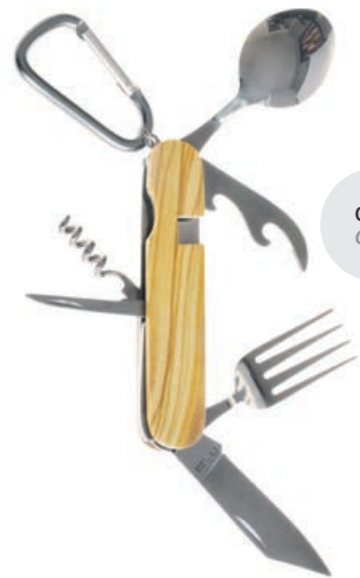


Foam

We produce and assemble your foam inlays with all imaginable shapes and options.



NEW ARRIVALS 2025



Olive
Olive



Bambus
Bamboo



Buche
Beech

Camping cutlery

Stainless steel

CAMELEONPACK > PAGE 29



coated white



Coin bank with

Bottom opening

ROUND BOXES > PAGE 50



Our new soap tins made of high-quality aluminum are perfect for everyday use. The rectangular tin DSS 020, as well as the round variants DSS 050, DSS 055, and DSS 060 with a practical screw lid, provide optimal protection for your soap. All tins are equipped with a drip tray and are completely rustproof – ideal for use in humid environments like the bathroom or kitchen. Stylish, functional, and sustainable.



Soap tins made of

Aluminium

ALUMINIUM BOXES > FROM PAGE 62

rust-free

SQUARE BOXES 22



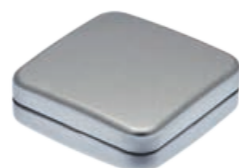
57 × 57 × 60 mm
DSQ 020

☞ 23



60 × 60 × 35 mm
DSQ 030

☞ 26



65 × 65 × 23 mm
DSQ 65.23

☞ 27



70 × 70 × 40 mm
DSQ 70.40

☞ 24



70 × 70 × 40 mm
DSQ 70.40.W

☞ 25



96 × 96 × 57 mm
DSQ 016

☞ 24



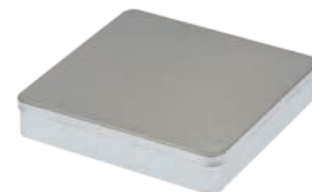
100 × 100 × 100 mm
DSQ 014

☞ 27

Delivery times

Delivery without finishing
3–7 days, with finishing
approx. 2–4 weeks after
production approval.
When available.

SQUARE BOXES 22



109 × 107 × 20 mm
CO 015

☞ 23



120 × 120 × 35 mm
DSQ 005

☞ 26



130 × 130 × 10 mm
MDE 015

☞ 23



140 × 140 × 60 mm
DSQ 140.60

☞ 25



150 × 150 × 54 mm
DSQ 010

☞ 25



150 × 150 × 65 mm
DSQ 11 BA

☞ 25



195 × 195 × 70 mm
DSQ 025

☞ 25

RECTANGULAR BOXES 30



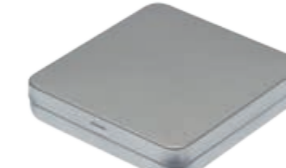
80 × 50 × 14 mm
DSE 065

☞ 34



86 × 58 × 17 mm
SDK 010

☞ 41



90 × 87 × 18 mm
DSE 90.87

☞ 36



95 × 60 × 12 mm
DSE 001

☞ 40



97 × 55 × 20 mm
DSE 067.05

☞ 34



98 × 63 × 55 mm
DSE 003

☞ 32



100 × 65 × 15 mm
DSE 002

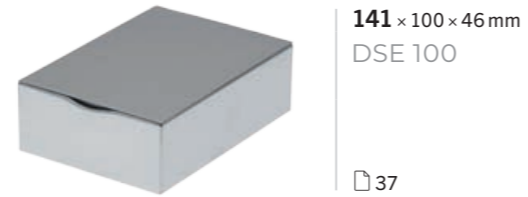
☞ 40

☞ = stackable

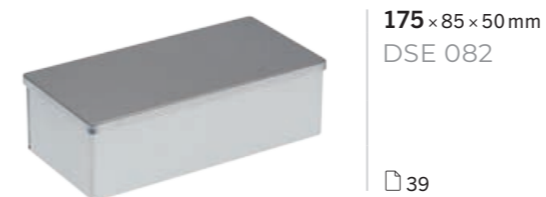
RECTANGULAR BOXES
30



RECTANGULAR BOXES
30



RECTANGULAR BOXES
30



RECTANGULAR BOXES
30

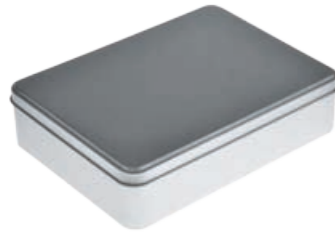


RECTANGULAR BOXES
30



240 x 180 x 60 mm
DSE 070

☞ 33



240 x 180 x 60 mm
DSE 071



☞ 39



250 x 150 x 70 mm
DSE 031 BAMBOO

☞ 41



260 x 135 x 78 mm
DSE 030

☞ 35



346 x 70 x 27 mm
DSE 340.70

☞ 39

☞ = stapelbar

Individual sizes
... on request.

ROUND BOXES
44



48 x 73 mm
DSR 48.73

☞ 49



50 x 18 mm
DSR 006

☞ 49



55 x 15 mm
PD 005

☞ 45



55 x 15 mm
TA 001

☞ 45



55 x 15 mm
TA 002

☞ 45



56 x 21 mm
DSR 007

☞ 46



58 x 44 mm
DSR 02.11

☞ 49

ROUND BOXES
44



65 x 19 mm
DSR 015

☞ 45



65 x 95 mm
DSR 65.95

☞ 48



72 x 50 mm
DSR 011

☞ 49



72 x 50 mm
DSR 012

☞ 46



72 x 111 mm
DSR 031

☞ 51



72 x 111 mm
DSR 032

☞ 51



80 x 90 mm
DSR 020

☞ 49

ROUND BOXES
44



80 x 140 mm
DSR 002

☞ 47



85 x 120 mm
DSR 033

new

☞ 50



85 x 175 mm
DSR 001

☞ 47



90 x 115 mm
DSR 90.115

☞ 48



95 x 175 mm
DSR 041



☞ 47



106 x 67 mm
DSR 040

☞ 47



108 x 120 mm
DSR 026

☞ 46

☞ = stackable

ROUND BOXES
44



123 × 10 mm
FD 005

☞ 50



123 × 10 mm
MDR 010

☞ 50



130 × 53 mm
DSR 046



☞ 46



150 × 50 mm
DSR 051

☞ 46



165 × 60 mm
DSR 055



☞ 47



180 × 22 mm
FD 010

☞ 51



180 × 45 mm
FD 015

☞ 51

ROUND BOXES
44



182 × 100 mm
DSR 100

☞ 47



190 × 70 mm
DSR 035

☞ 47



240 × 60 mm
FD 100

☞ 51

☞ = stackable

COFFEE TINS
52



65 × 75 mm
DSA 001

☞ 53



90 × 85 mm
DSA 005

☞ 53



95 × 73 × 104 mm
DSA 010

☞ 53



105 × 150 mm
DSA 025

☞ 55



105 × 150 mm
DSA 027

☞ 55



105 × 155 mm
DSA 026

☞ 55



105 × 155 mm
DSA 030 BA

☞ 54

COFFEE TINS
52



120 × 75 × 185 mm
DSA 021

☞ 55

Food-safe

All tins are covered
with food-safe
laquer.

PAPER SIZE BOXES

56

PAPER SIZE BOXES

56

ALUMINIUM BOXES

62


ALUMINIUM BOXES

62

-  **155 × 115 × 10 mm**
A6
☞ 61
-  **162 × 112 × 20 mm**
A6 MAXI
☞ 58
-  **162 × 112 × 20 mm**
A6 MAXI VIEW
☞ 57
-  **215 × 155 × 13 mm**
A5
☞ 61
-  **215 × 155 × 13 mm**
A5 VIEW
☞ 57
-  **220 × 160 × 28 mm**
A5 MAXI
☞ 58
-  **220 × 160 × 65 mm**
A5 XL
☞ 59

-  **227 × 163 × 37 mm**
A5 STYLE
☞ 59
-  **225 × 115 × 10 mm**
DL
☞ 61
-  **225 × 115 × 10 mm**
DLV
☞ 57
-  **310 × 220 × 25 mm**
A4
☞ 61
-  **310 × 220 × 42 mm**
A4 MAXI
☞ 58

☞ = stackable

-  **38 × 102 mm**
DRA 38.102
☞ 66
-  **46 × 31 mm**
DRA 46.31
☞ 66
-  **47 × 15 mm**
DRA 47.15
☞ 66
-  **60 × 45 mm**
DRA 60.45
☞ 67
-  **61 × 45 × 22 mm**
DSS 005
☞ 64
-  **64 × 33 mm**
DRA 05.10
☞ 67
-  **68 × 35 mm**
DSS 050
☞ 63
-  **68 × 85 mm**
DRA 68.85
☞ 67
-  **72 × 32 mm**
DRA 72.32
☞ 67
-  **72 × 53 × 24 mm**
DSS 010
☞ 64
-  **75 × 60 mm**
DRA 75.60
☞ 66
-  **80 × 27 mm**
DRA 80.27
☞ 67
-  **80 × 38 mm**
DSS 055 new
☞ 63
-  **85 × 35 mm**
DRA 85.35
☞ 67



90 × 45 mm
DSS 060

new

63



95 × 65 × 25 mm
DSS 015

64



100 × 35 mm
DRA 100.35

67



100 × 70 × 35 mm
DSS 020

65



100 × 70 × 35 mm
DSS 025

new

65

Individual design
Tins with individual design starting from 100 pieces.



123 × 10 mm
MDT 010 {black}

69



123 × 10 mm
MDT 011 {red}

69



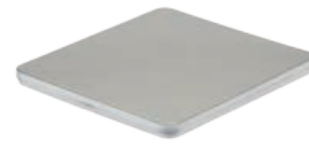
123 × 10 mm
MDT 020 {black}

69



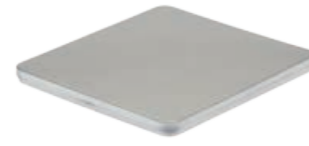
123 × 10 mm
MDT 021 {red}

69



140 × 125 × 10 mm
MDT 005 {black}

69



140 × 125 × 10 mm
MDT 006 {red}

69



162 × 112 × 20 mm
MDT A6 MAXI

70



162 × 112 × 20 mm
MDT A6V

70



215 × 155 × 13 mm
MDT A5

70



215 × 155 × 13 mm
MDT A5V

71



225 × 115 × 10 mm
MDT DL

71



225 × 115 × 10 mm
MDT DLV

71



86 × 58 × 17 mm
SDK 005

75



115 × 85 × 22 mm
USB 010

75



140 × 125 × 10 mm
MDE 005

75



190 × 135 × 18 mm
MDD 010

73



190 × 135 × 18 mm
MDD 011

73



190 × 135 × 18 mm
MDS 015

73



SQUARE BOXES

- > SQUARE BOXES
- RECTANGULAR BOXES
- ROUND BOXES
- COFFEE TINS
- PAPER SIZE BOXES
- ALUMINIUM BOXES
- VOUCHER BOXES
- MEDIA BOXES



■ DSQ 020

EAN 4260699060099

| | |
|---------------------------------|-----------------|
| Item number | DSQ 020 |
| Dimensions | 57 × 57 × 60 mm |
| Weight | 50 g |
| Capacity | 190 ml |
| Material | tinplate |
| Pieces per unit Pallet | 100 3600 |



■ MDE 015

EAN 4260699061577

| | |
|---------------------------------|-------------------|
| Item number | MDE 015 |
| Dimensions | 130 × 130 × 10 mm |
| Weight | 80 g |
| Capacity | 170 ml |
| Material | tinplate |
| Pieces per unit Pallet | 50 4600 |



■ CO 015

EAN 4260699060037

| | |
|---------------------------------|-------------------|
| Item number | CO 015 |
| Dimensions | 109 × 107 × 20 mm |
| Weight | 70 g |
| Capacity | 230 ml |
| Material | tinplate |
| Pieces per unit Pallet | 100 5300 |



Fast delivery.



DSQ 030

DSQ 70.40 W

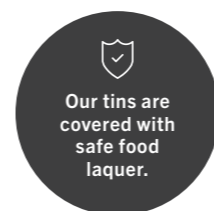


■ DSQ 11 BA

EAN 4260699062147



| | |
|--------------------------|-------------------|
| Item number | DSQ 11 BA |
| Dimensions | 150 × 150 × 70 mm |
| Weight | 286g |
| Capacity | 1450 ml |
| Material | tinplate, bamboo |
| Pieces per unit Pallet | 20 600 |



■ DSQ 70.40 W

EAN 4260699060167



| | |
|--------------------------|-----------------|
| Item number | DSQ 70.40 W |
| Dimensions | 70 × 70 × 40 mm |
| Weight | 50g |
| Capacity | 200 ml |
| Material | tinplate, PET |
| Pieces per unit Pallet | 100 4800 |



| | |
|--------------------------|-----------------|
| Item number | DSQ 70.40 |
| Dimensions | 70 × 70 × 40 mm |
| Weight | 50g |
| Capacity | 200 ml |
| Material | tinplate |
| Pieces per unit Pallet | 100 4800 |



■ DSQ 70.40

EAN 4260699060150

■ DSQ 016

EAN 4260699060082

| | | |
|--------------------------|-----------------|-----------------|
| Item number | DSQ 70.40 | DSQ 016 |
| Dimensions | 70 × 70 × 40 mm | 96 × 96 × 57 mm |
| Weight | 50g | 120g |
| Capacity | 200 ml | 525 ml |
| Material | tinplate | tinplate |
| Pieces per unit Pallet | 100 4800 | 60 1500 |



■ DSQ 140.60

EAN 4260699060136

■ DSQ 010

EAN 4260699060068

■ DSQ 025

EAN 4260699060105

| | | | |
|--------------------------|-------------------|-------------------|-------------------|
| Item number | DSQ 140.60 | DSQ 010 | DSQ 025 |
| Dimensions | 140 × 140 × 60 mm | 150 × 150 × 54 mm | 195 × 195 × 70 mm |
| Weight | 160g | 180g | 280g |
| Capacity | 1170 ml | 1200 ml | 2660 ml |
| Material | tinplate | tinplate | tinplate |
| Pieces per unit Pallet | 40 800 | 40 800 | 20 480 |



DSQ 030



Condom tin



■ **DSQ 65.23** EAN 4260699060143

| | |
|--------------------------|-----------------|
| Item number | DSQ 65.23 |
| Dimensions | 65 × 65 × 23 mm |
| Weight | 40 g |
| Capacity | 42 ml |
| Material | tinplate |
| Pieces per unit Pallet | 144 5760 |



■ **DSQ 014** EAN 4260699060075

| | |
|--------------------------|--------------------|
| Item number | DSQ 014 |
| Dimensions | 100 × 100 × 100 mm |
| Weight | 125 g |
| Capacity | 1000 ml |
| Material | tinplate |
| Pieces per unit Pallet | 48 1152 |



Stock program available from 1 unit



■ **DSQ 030**

EAN 4260699060129

| | |
|--------------------------|-----------------|
| Item number | DSQ 030 |
| Dimensions | 60 × 60 × 35 mm |
| Weight | 40 g |
| Capacity | 75 ml |
| Material | tinplate |
| Pieces per unit Pallet | 100 6000 |

■ **DSQ 005**

EAN 4260699060051

| | |
|--------------------------|-------------------|
| Item number | DSQ 005 |
| Dimensions | 120 × 120 × 35 mm |
| Weight | 110 g |
| Capacity | 300 ml |
| Material | tinplate |
| Pieces per unit Pallet | 60 2160 |

Cameleon[®]
pack *Safe*
STAINLESS STEEL



Safe
Junglepicknick
CP SA 10



Brunchbox Safe
Jungleschmaus
CP SA 15

Cameleon[®]
pack *Brunchbox*
STAINLESS STEEL



Brunchbox Click
Maxi Meal
CP ES C7



Brunchbox Click
Jungleschmaus
CP BA C8

Cameleon[®]
pack *Click*
STAINLESS STEEL



Click Maxi
CP ES C2



Click
Junglepicknick
CP BA C1



Click
Waldpicknick
CP BU C4



Click Smart
CP ES C3



Click
Junglesnack
CP BA C5



Click
Waldsnack
CP BU C6

Cameleon[®]
pack *Classic*



Classic Green
LB GREEN



Classic Maxi
LB XL



Classic Smart
LB SILVER



Classic
Waldsnack
LB BU 05



Classic
Junglesnack
LB BA 05

Cameleon[®]
pack
ACCESSOIRES



Camping cutlery
olive wood
BE 01



Camping cutlery
bamboo
BE 05



Camping cutlery
beech wood
BE 10



Drinking bottle
white
TFL 025



Kids' water bottle
TFL 015



Stainless steel drinking
bottle with bamboo lid
TFL 010



Pop-up lid for
drinking bottle
TFL 002



Set Jungle
CP BA C1
+ TFL 010

Stainless steel, tinplate, bamboo, beech wood.

Cameleon[®]
pack
Lunchbox

We will be glad to advise you. +49 (0) 3621 733 800

www.cameleonpack.com

■ DSE 012

EAN 4260699060280

| | |
|--------------------------|------------------|
| Item number | DSE 012 |
| Dimensions | 150 × 60 × 45 mm |
| Weight | 90 g |
| Capacity | 400 ml |
| Material | tinplate |
| Pieces per unit Pallet | 50 1800 |



■ DSE 100.65

EAN 4260699062031

| | |
|--------------------------|------------------|
| Item number | DSE 100.65 |
| Dimensions | 100 × 65 × 13 mm |
| Weight | 35 g |
| Capacity | 85 ml |
| Material | tinplate |
| Pieces per unit Pallet | 150 9900 |



Playing card case

■ DSE 110

EAN 4260699060563

| | |
|--------------------------|-------------------|
| Item number | DSE 110 |
| Dimensions | 155 × 110 × 35 mm |
| Weight | 130 g |
| Capacity | 595 ml |
| Material | tinplate |
| Pieces per unit Pallet | 40 1800 |



RECTANGULAR BOXES

- SQUARE BOXES
- › RECTANGULAR BOXES
- ROUND BOXES
- COFFEE TINS
- PAPER SIZE BOXES
- ALUMINIUM BOXES
- VOUCHER BOXES
- MEDIA BOXES



DSE 10.20



■ DSE 003

EAN 4260699060228

| | |
|---------------------------------|-----------------|
| Item number | DSE 003 |
| Dimensions | 98 × 63 × 55 mm |
| Weight | 80g |
| Capacity | 340 ml |
| Material | tinplate |
| Pieces per unit Pallet | 90 2700 |

Pencil case



■ DSO 005

EAN 4260699060884

| | |
|---------------------------------|------------------|
| Item number | DSO 005 |
| Dimensions | 175 × 35 × 18 mm |
| Weight | 45g |
| Capacity | 60 ml |
| Material | tinplate |
| Pieces per unit Pallet | 100 5400 |



■ DSE 10.10

EAN 4260699060266

| |
|------------------|
| DSE 10.10 |
| 130 × 72 × 70 mm |
| 110g |
| 655 ml |
| tinplate |
| 60 1440 |



■ DSE 10.20

EAN 4260699060273

| |
|-------------------|
| DSE 10.20 |
| 130 × 72 × 140 mm |
| 170g |
| 1310 ml |
| tinplate |
| 45 810 |



■ DSE 070

EAN 4260699062130

| |
|-------------------|
| DSE 070 |
| 240 × 180 × 60 mm |
| 300g |
| 2635 ml |
| tinplate |
| 20 400 |


The right size is not available? More than 1000 tools usable for free!



■ **DSE 065**

EAN 4260699060433

| | |
|--------------------------|-----------------|
| Item number | DSE 065 |
| Dimensions | 80 × 50 × 14 mm |
| Weight | 25 g |
| Capacity | 56 ml |
| Material | tinplate |
| Pieces per unit Pallet | 100 14000 |

■ **DSE 067.05**

EAN 4260699060457

| | |
|--------------------------|-----------------|
| Item number | DSE 067.05 |
| Dimensions | 97 × 55 × 20 mm |
| Weight | 40 g |
| Capacity | 105 ml |
| Material | tinplate |
| Pieces per unit Pallet | 100 7200 |

■ **DSE 015**

EAN 4260699060297

| | |
|--------------------------|------------------|
| Item number | DSE 015 |
| Dimensions | 150 × 80 × 27 mm |
| Weight | 85 g |
| Capacity | 320 ml |
| Material | tinplate |
| Pieces per unit Pallet | 80 2560 |



■ **DSE 150**

EAN 4260699061621

| | |
|--------------------------|--------------------|
| Item number | DSE 150 |
| Dimensions | 180 × 165 × 122 mm |
| Weight | 310 g |
| Capacity | 3600 ml |
| Material | tinplate |
| Pieces per unit Pallet | 12 288 |



■ **DSE 087**

EAN 4260699060495

| | |
|--------------------------|-------------------|
| Item number | DSE 087 |
| Dimensions | 185 × 135 × 70 mm |
| Weight | 210 g |
| Capacity | 1930 ml |
| Material | tinplate |
| Pieces per unit Pallet | 20 720 |



■ **DSE 005**

EAN 4260699060235

| | |
|--------------------------|-------------------|
| Item number | DSE 005 |
| Dimensions | 188 × 122 × 35 mm |
| Weight | 155 g |
| Capacity | 800 ml |
| Material | tinplate |
| Pieces per unit Pallet | 40 1440 |



■ **DSE 084**

EAN 4260699060488

| | |
|--------------------------|------------------|
| Item number | DSE 084 |
| Dimensions | 198 × 80 × 25 mm |
| Weight | 110 g |
| Capacity | 396 ml |
| Material | tinplate |
| Pieces per unit Pallet | 60 2280 |



■ **DSE 091**

EAN 4260699060518

| | |
|--------------------------|-------------------|
| Item number | DSE 091 |
| Dimensions | 220 × 160 × 65 mm |
| Weight | 255 g |
| Capacity | 2280 ml |
| Material | tinplate |
| Pieces per unit Pallet | 20 500 |



■ **DSE 030**

EAN 4260699060419

| | |
|--------------------------|-------------------|
| Item number | DSE 030 |
| Dimensions | 260 × 135 × 78 mm |
| Weight | 280 g |
| Capacity | 2700 ml |
| Material | tinplate |
| Pieces per unit Pallet | 30 480 |

Offset printing
starting from
2000 pieces



Coated grey
PANTONE 430

■ **DSE 12.8.20**
DSE 12.8.20.430 {grey}

EAN 4260699060570
EAN 4260699060587

| | |
|--------------------------|-------------------------------|
| Item number | DSE 12.8.20 DSE 12.8.20.430 |
| Dimensions | 120 × 78 × 195 mm |
| Weight | 190 g |
| Capacity | 1825 ml |
| Material | tinplate |
| Pieces per unit Pallet | 40 640 |

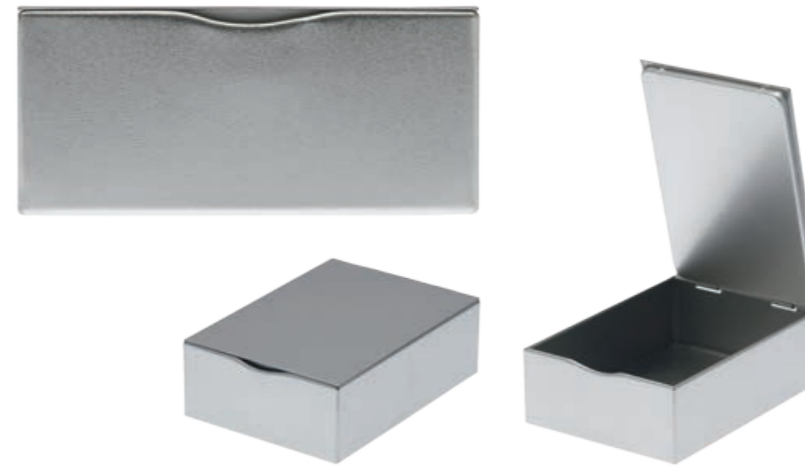


DSE 100

■ DSE 100

EAN 4260699060532

| | |
|--------------------------|-------------------|
| Item number | DSE 100 |
| Dimensions | 141 × 100 × 46 mm |
| Weight | 130g |
| Capacity | 648 ml |
| Material | tinplate |
| Pieces per unit Pallet | 48 768 |



■ MDE 010

EAN 4260699061560

| | |
|--------------------------|-------------------|
| Item number | MDE 010 |
| Dimensions | 140 × 125 × 10 mm |
| Weight | 85g |
| Capacity | 175 ml |
| Material | tinplate |
| Pieces per unit Pallet | 105 5040 |



Individual shapes and designs



Cigarette case

■ DSE 90.87

EAN 4260699060525

| | |
|--------------------------|-----------------|
| Item number | DSE 90.87 |
| Dimensions | 90 × 87 × 18 mm |
| Weight | 45g |
| Capacity | 140 ml |
| Material | tinplate |
| Pieces per unit Pallet | 120 3480 |



■ MDD 005

EAN 4260699061522

| | |
|--------------------------|-------------------|
| Item number | MDD 005 |
| Dimensions | 190 × 135 × 18 mm |
| Weight | 120g |
| Capacity | 460 ml |
| Material | tinplate |
| Pieces per unit Pallet | 80 1840 |



Chocolate tins

■ CO 005

EAN 4260699060006

CO 005 W {with wax paper}

| | |
|--------------------------|-------------------|
| Item number | CO 005 CO 005 W |
| Dimensions | 190 × 95 × 10 mm |
| Weight | 90g |
| Capacity | 180 ml |
| Material | tinplate |
| Pieces per unit Pallet | 80 5120 |



coated white

■ CO 010

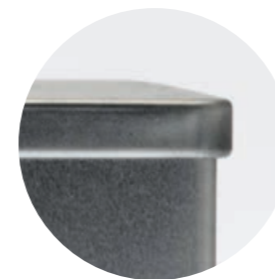
EAN 4260699060020

CO 010 W {with wax paper}

| | |
|--------------------------|-------------------|
| Item number | CO 010 CO 010 W |
| Dimensions | 190 × 95 × 10 mm |
| Weight | 90g |
| Capacity | 180 ml |
| Material | tinplate |
| Pieces per unit Pallet | 80 5120 |



DSE 082



■ DSE 082

EAN 4260699060471

Item number
Dimensions
Weight
Capacity
Material
Pieces per unit | Pallet

DSE 082
175 × 85 × 50 mm
130g
820 ml
tinplate
56 | 1120

■ DSE 200

EAN 4260699061638

DSE 200
227 × 163 × 37 mm
240g
1369 ml
tinplate
40 | 640



Pieces per unit | Pallet



■ DSE 066

EAN 4260699060440

Item number
Dimensions
Weight
Capacity
Material

DSE 066
104 × 75 × 26 mm
50g
200 ml
tinplate



■ DSE 125.87

EAN 4260699061867

DSE 125.87
125 × 87 × 58 mm
105g
575 ml
tinplate



■ DSE 105

EAN 4260699060549

DSE 105
145 × 85 × 53 mm
120g
655 ml
tinplate



■ DSE 006

EAN 4260699060242

DSE 006
180 × 98 × 58 mm
150g
1000 ml
tinplate



■ DSE 071

EAN 4260699060464

DSE 071
240 × 180 × 60 mm
280g
2590 ml
tinplate



■ DSE 340.70

EAN 4260699061645

DSE 340.70
346 × 70 × 27 mm
155g
654 ml
tinplate





■ **DSE 001** EAN 4260699060204

| | |
|--------------------------|-----------------|
| Item number | DSE 001 |
| Dimensions | 95 × 60 × 12 mm |
| Weight | 50 g |
| Capacity | 70 ml |
| Material | tinplate |
| Pieces per unit Pallet | 100 14400 |



Business card case

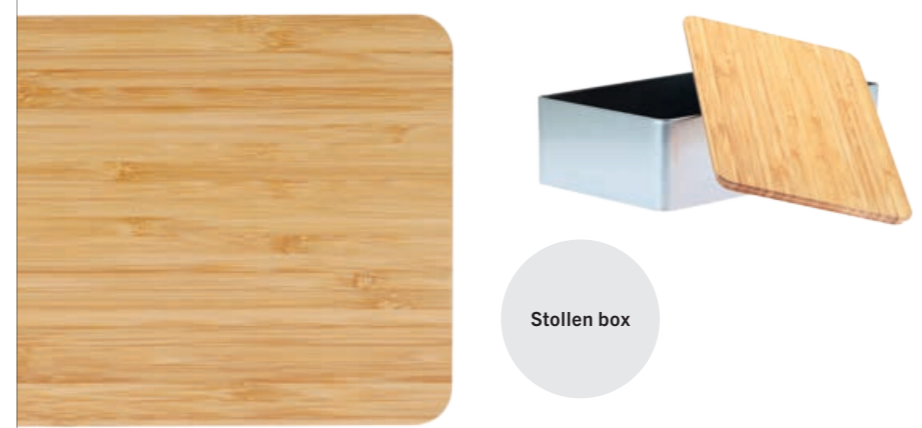
■ **DSE 002** EAN 4260699060211

| | |
|--------------------------|------------------|
| Item number | DSE 002 |
| Dimensions | 100 × 65 × 15 mm |
| Weight | 50 g |
| Capacity | 70 ml |
| Material | tinplate |
| Pieces per unit Pallet | 100 9000 |



■ **DSE 031 BAMBOO** EAN 4260699060426

| | |
|--------------------------|-------------------|
| Item number | DSE 031 BAMBOO |
| Dimensions | 250 × 150 × 70 mm |
| Weight | 410 g |
| Capacity | 2700 ml |
| Material | tinplate, bamboo |
| Pieces per unit Pallet | 20 480 |



Stollen box



■ **SDK 010**
EAN 4260699061669

| |
|-----------------|
| SDK 010 |
| 86 × 58 × 17 mm |
| 30 g |
| 85 ml |
| tinplate, PET |
| 100 8000 |

■ **DSE 115.85**
EAN 4260699061874

| |
|------------------|
| DSE 115.85 |
| 115 × 85 × 22 mm |
| 60 g |
| 215 ml |
| tinplate, PET |
| 100 6000 |

■ **DSE 010**
EAN 4260699060259

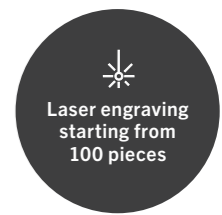
| |
|------------------|
| DSE 010 |
| 145 × 70 × 45 mm |
| 90 g |
| 450 ml |
| tinplate, PET |
| 50 2000 |

■ **DSE 106**
EAN 4260699060556

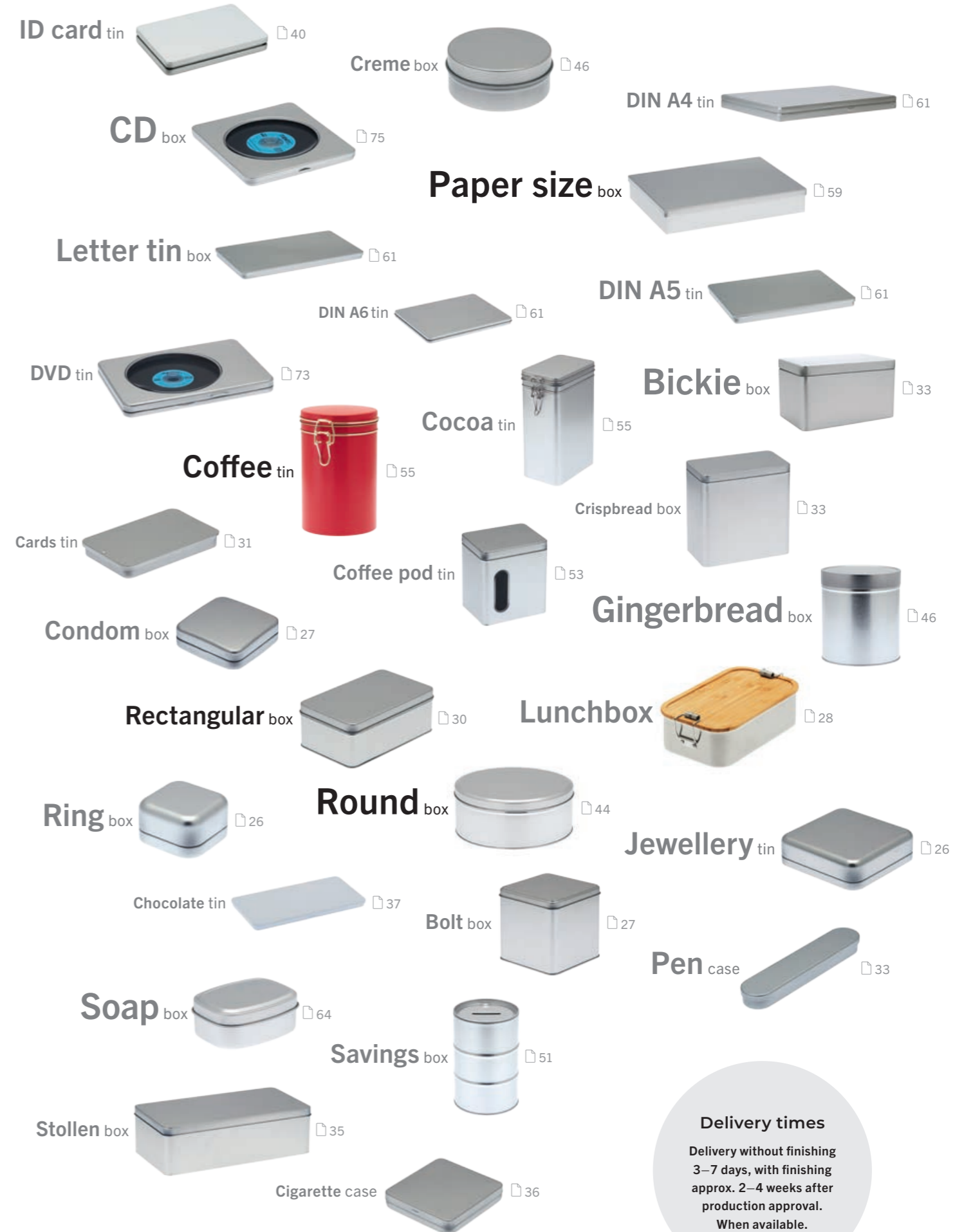
| |
|------------------|
| DSE 106 |
| 145 × 90 × 35 mm |
| 100 g |
| 455 ml |
| tinplate, PET |
| 40 1680 |



DSE 031 BAMBOO



TIN FINDER



Delivery times
 Delivery without finishing
 3–7 days, with finishing
 approx. 2–4 weeks after
 production approval.
 When available.



ROUND BOXES

- SQUARE BOXES
- RECTANGULAR BOXES
- › ROUND BOXES
- COFFEE TINS
- PAPER SIZE BOXES
- ALUMINIUM BOXES
- VOUCHER BOXES
- MEDIA BOXES



Pill box

Pocket ashtray

• PD 005

| | |
|--------------------------|---------------------|
| Item number | PD 005 |
| Dimensions | 55 x 15 mm |
| Weight | 30g |
| Capacity | 35 ml |
| Material | tinplate, PET Inlay |
| Pieces per unit Pallet | 200 12000 |

• TA 002

| | |
|--------------------------|---------------------|
| Item number | TA 002 |
| Dimensions | 55 x 15 mm |
| Weight | 30g |
| Capacity | 35 ml |
| Material | tinplate, PET Inlay |
| Pieces per unit Pallet | 100 6000 |

• TA 001

| | |
|--------------------------|---------------------|
| Item number | TA 001 |
| Dimensions | 55 x 15 mm |
| Weight | 30g |
| Capacity | 35 ml |
| Material | tinplate, PET Inlay |
| Pieces per unit Pallet | 100 6000 |



• DSR 015

EAN 4260699060693



| | |
|--------------------------|-------------------|
| Item number | DSR 015 |
| Dimensions | 65 x 19 mm |
| Weight | 30g |
| Capacity | 60 ml |
| Material | tinplate, acrylic |
| Pieces per unit Pallet | 100 6400 |



Individual sizes





Item number
Dimensions
Weight
Capacity
Material
Pieces per unit | Pallet

• DSR 007

EAN 4260699060662

DSR 007
56 x 21 mm
25 g
55 ml
tinplate
108 | 8424

• DSR 012

EAN 4260699060686

DSR 012
72 x 50 mm
40 g
200 ml
tinplate
100 | 3600



• DSR 002

EAN 4260699060648

DSR 002
80 x 140 mm
110 g
700 ml
tinplate
32 | 960

• DSR 001

EAN 4260699060631

DSR 001
85 x 175 mm
130 g
990 ml
tinplate
32 | 960

• DSR 041

EAN 4260699060778

DSR 041
95 x 175 mm
150 g
1240 ml
tinplate
24 | 480

• DSR 040

EAN 4260699060761

DSR 040
106 x 67 mm
90 g
455 ml
tinplate
60 | 1560



• DSR 026

EAN 4260699060723

DSR 026
108 x 120 mm
130 g
1100 ml
tinplate
30 | 720

• DSR 046

EAN 4260699060785

DSR 046
130 x 53 mm
110 g
690 ml
tinplate
54 | 1188

• DSR 051

EAN 4260699060792

DSR 051
150 x 50 mm
135 g
880 ml
tinplate
20 | 600



• DSR 055

EAN 4260699062055

DSR 055
165 x 60 mm
171 g
1300 ml
tinplate
20 | 600

• DSR 100

EAN 4260699060808

DSR 100
182 x 100 mm
230 g
2600 ml
tinplate
16 | 384

• DSR 035

EAN 4260699060754

DSR 035
190 x 70 mm
210 g
1980 ml
tinplate
20 | 480

Tea tins



• DSR 65.95 EAN 4260699061706

| | |
|--------------------------|------------|
| Item number | DSR 65.95 |
| Dimensions | 65 × 95 mm |
| Weight | 50g |
| Capacity | 250 ml |
| Material | tinplate |
| Pieces per unit Pallet | 100 2400 |



• DSR 90.115 EAN 4260699060822

| | |
|--------------------------|-------------|
| Item number | DSR 90.115 |
| Dimensions | 90 × 115 mm |
| Weight | 100g |
| Capacity | 550 ml |
| Material | tinplate |
| Pieces per unit Pallet | 48 1152 |

Spice shaker



• DSR 48.73 EAN 4260699060815

| | |
|--------------------------|---------------|
| Item number | DSR 48.73 |
| Dimensions | 48 × 73 mm |
| Weight | 40g |
| Capacity | 132 ml |
| Material | tinplate, PET |
| Pieces per unit Pallet | 100 4000 |



Eco-friendly



• DSR 006

| | |
|--------------------------|-------------------|
| EAN | 4260699060655 |
| Item number | DSR 006 |
| Dimensions | 50 × 18 mm |
| Weight | 15g |
| Capacity | 35 ml |
| Material | tinplate, acrylic |
| Pieces per unit Pallet | 100 15000 |



• DSR 02.11

| | |
|--------------------------|-------------------|
| EAN | 4260699060709 |
| Item number | DSR 02.11 |
| Dimensions | 58 × 44 mm |
| Weight | 30g |
| Capacity | 115 ml |
| Material | tinplate, acrylic |
| Pieces per unit Pallet | 108 5184 |



• DSR 011

| | |
|--------------------------|-------------------|
| EAN | 4260699060679 |
| Item number | DSR 011 |
| Dimensions | 72 × 50 mm |
| Weight | 40g |
| Capacity | 200 ml |
| Material | tinplate, acrylic |
| Pieces per unit Pallet | 100 3600 |



• DSR 020

| | |
|--------------------------|-------------------|
| EAN | 4260699060716 |
| Item number | DSR 020 |
| Dimensions | 80 × 90 mm |
| Weight | 80g |
| Capacity | 450 ml |
| Material | tinplate, acrylic |
| Pieces per unit Pallet | 48 1440 |



DSR 011

DSR 006

DSR 02.11

| | |
|--------------------------|--|
| Item number | |
| Dimensions | |
| Weight | |
| Capacity | |
| Material | |
| Pieces per unit Pallet | |



Item number
Dimensions
Weight
Capacity
Material
Pieces per unit | Pallet

• MDR010

EAN 4260699061584

MDR 010
 123 × 10 mm
 55g
 120 ml
 tinplate
 105 | 5040

• FD005

EAN 4260699060839

FD 005
 123 × 10 mm
 55g
 120 ml
 tinplate
 105 | 5040

• FD010

EAN 4260699060846

FD 010
 180 × 22 mm
 125g
 560 ml
 tinplate
 40 | 1440

• FD015

EAN 4260699060853

FD 015
 180 × 45 mm
 160g
 1145 ml
 tinplate
 32 | 960

• FD100

EAN 4260699060860

FD 100
 240 × 60 mm
 280g
 2700 ml
 tinplate
 10 | 300

DOSEPLUS
 TINPLATE PACKAGING



Coated white



new

• DSR 033

EAN 04260699062413

Item number DSR 033
Dimensions 85 × 120 mm
Weight 90g
Capacity 680 ml
Material tinplate, PP, coated white
Pieces per unit | Pallet 48 | 1152



• DSR 031
 DSR 032 {Coin bank}

EAN 4260699060730
 EAN 4260699060747



Item number DSR 031 | DSR 032
Dimensions 72 × 111 mm
Weight 75g
Capacity 450 ml
Material tinplate
Pieces per unit | Pallet 50 | 2100



COFFEE TINS



• DSA 001

EAN 4260699062062

| | |
|--------------------------|------------|
| Item number | DSA 001 |
| Dimensions | 65 x 75 mm |
| Weight | 75 g |
| Capacity | 175 ml |
| Material | tinplate |
| Pieces per unit Pallet | 80 2400 |



• DSA 005

EAN 4260699060594

| | |
|--------------------------|--------------|
| Item number | DSA 005 |
| Dimensions | 90 x 85 mm |
| Weight | 110 g |
| Capacity | 540 ml |
| Material | tinplate, PP |
| Pieces per unit Pallet | 48 1440 |



- SQUARE BOXES
- RECTANGULAR BOXES
- ROUND BOXES
- › COFFEE TINS
- PAPER SIZE BOXES
- ALUMINIUM BOXES
- VOUCHER BOXES
- MEDIA BOXES



■ DSA 010

EAN 4260699060044

| | |
|--------------------------|------------------|
| Item number | DSA 010 |
| Dimensions | 95 x 73 x 104 mm |
| Weight | 115 g |
| Capacity | 690 ml |
| Material | tinplate, PET |
| Pieces per unit Pallet | 50 1500 |



• **DSA 030 BA** EAN 4260699062185

| | |
|--------------------------|------------------|
| Item number | DSA 030 BA |
| Dimensions | 105 x 155 mm |
| Weight | 260 g |
| Capacity | 1300 ml |
| Material | tinplate, bamboo |
| Pieces per unit Pallet | 30 480 |



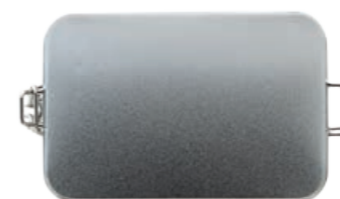

Certified quality
for all products



for 500 g coffee

■ **DSA 021** EAN 4260699060198

| | |
|--------------------------|-------------------|
| Item number | DSA 021 |
| Dimensions | 120 x 75 x 185 mm |
| Weight | 245 g |
| Capacity | 1700 ml |
| Material | tinplate |
| Pieces per unit Pallet | 32 512 |



| | |
|--------------------------|--------------|
| Item number | DSA 025 |
| Dimensions | 105 x 150 mm |
| Weight | 200 g |
| Capacity | 1300 ml |
| Material | tinplate |
| Pieces per unit Pallet | 30 600 |



• **DSA 025**

| | |
|--------------------------|---------------|
| EAN | 4260699060600 |
| Item number | DSA 025 |
| Dimensions | 105 x 150 mm |
| Weight | 200 g |
| Capacity | 1300 ml |
| Material | tinplate |
| Pieces per unit Pallet | 30 600 |



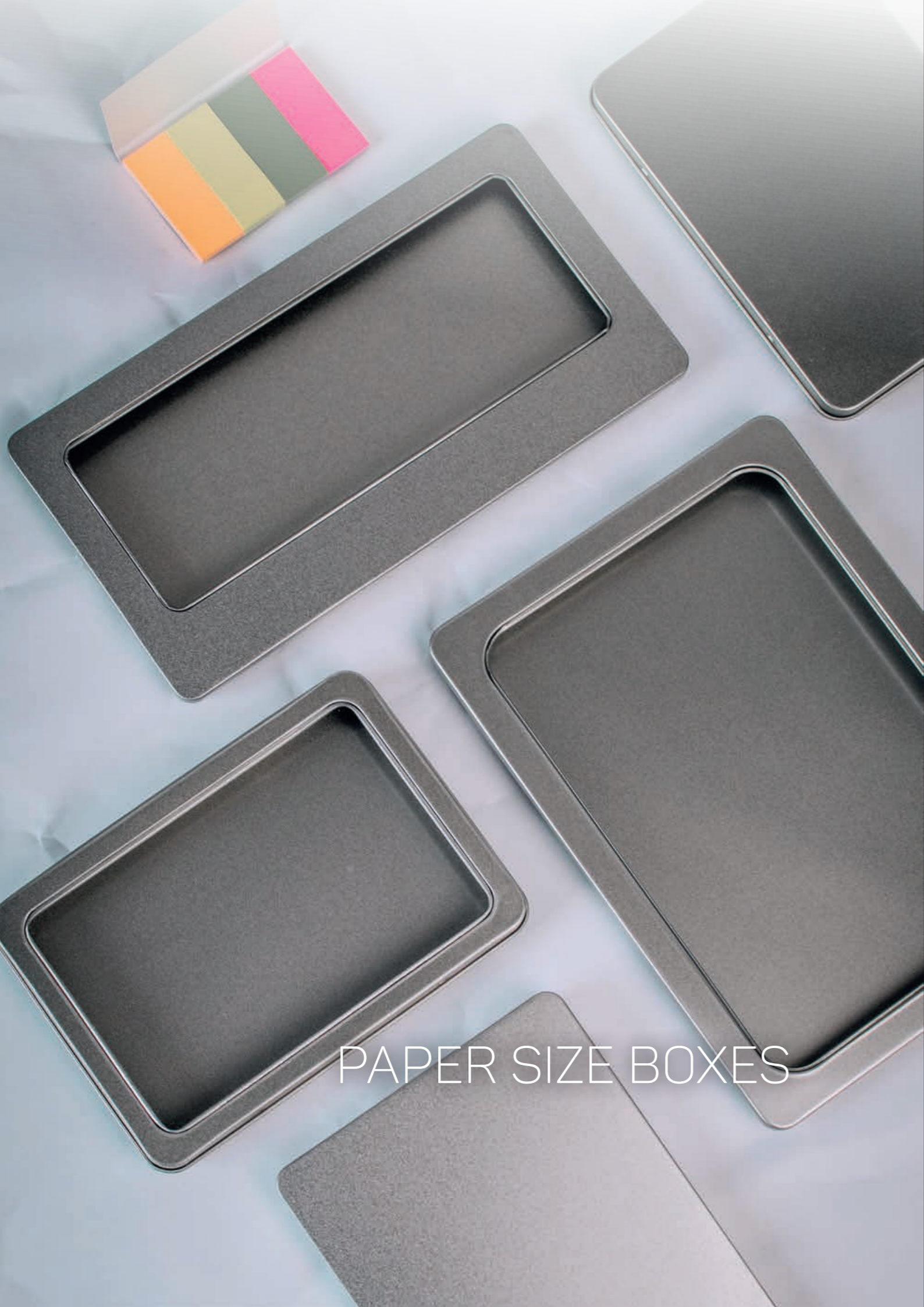
• **DSA 026**

| | |
|--------------------------|-----------------------|
| EAN | 4260699060617 |
| Item number | DSA 026 |
| Dimensions | 105 x 155 mm |
| Weight | 200 g |
| Capacity | 1300 ml |
| Material | tinplate, matte black |
| Pieces per unit Pallet | 30 600 |



• **DSA 027**

| | |
|--------------------------|---------------------|
| EAN | 4260699060624 |
| Item number | DSA 027 |
| Dimensions | 105 x 150 mm |
| Weight | 200 g |
| Capacity | 1300 ml |
| Material | tinplate, matte red |
| Pieces per unit Pallet | 30 600 |



PAPER SIZE BOXES

- SQUARE BOXES
- RECTANGULAR BOXES
- ROUND BOXES
- COFFEE TINS
- › PAPER SIZE BOXES
- ALUMINIUM BOXES
- VOUCHER BOXES
- MEDIA BOXES



DLV

EAN 4260699060402

| | |
|--------------------------|-------------------|
| Item number | DLV |
| Dimensions | 225 × 115 × 10 mm |
| Weight | 110 g |
| Capacity | 260 ml |
| Material | tinplate, PET |
| Pieces per unit Pallet | 50 2500 |



A5 VIEW

EAN 4260699060358

| | |
|--------------------------|-------------------|
| Item number | A5 VIEW |
| Dimensions | 215 × 155 × 13 mm |
| Weight | 130 g |
| Capacity | 430 ml |
| Material | tinplate, PET |
| Pieces per unit Pallet | 40 2000 |



A6 MAXI VIEW

EAN 4260699060389

| | |
|--------------------------|-------------------|
| Item number | A6 MAXI VIEW |
| Dimensions | 162 × 112 × 20 mm |
| Weight | 80 g |
| Capacity | 360 ml |
| Material | tinplate, PET |
| Pieces per unit Pallet | 80 2800 |





■ **A6 MAXI**

EAN 4260699060372

| | |
|---------------------------------|-------------------|
| Item number | A6 MAXI |
| Dimensions | 162 × 112 × 20 mm |
| Weight | 100 g |
| Capacity | 360 ml |
| Material | tinplate |
| Pieces per unit Pallet | 80 2800 |



■ **A5 MAXI**

EAN 4260699060327

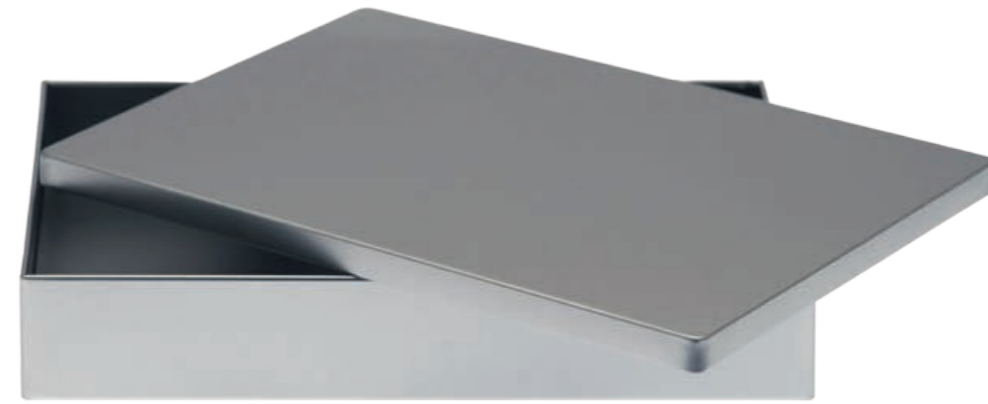
| | |
|---------------------------------|-------------------|
| Item number | A5 MAXI |
| Dimensions | 220 × 160 × 28 mm |
| Weight | 200 g |
| Capacity | 2900 ml |
| Material | tinplate |
| Pieces per unit Pallet | 40 1200 |



■ **A4 MAXI**

EAN 4260699060303

| | |
|---------------------------------|-------------------|
| Item number | A4 MAXI |
| Dimensions | 310 × 220 × 42 mm |
| Weight | 400 g |
| Capacity | 2900 ml |
| Material | tinplate |
| Pieces per unit Pallet | 16 288 |



■ **A5 STYLE**

EAN 4260699061638

| | |
|-------------------|---------------------------------|
| A5 STYLE | Item number |
| 227 × 163 × 37 mm | |
| 240 g | Weight |
| 1369 ml | Capacity |
| tinplate | Material |
| 40 640 | Pieces per unit Pallet |



■ **A5 XL**

EAN 4260699060334

| | |
|-------------------|---------------------------------|
| A5 XL | Item number |
| 220 × 160 × 65 mm | |
| 255 g | Weight |
| 2280 ml | Capacity |
| tinplate | Material |
| 20 500 | Pieces per unit Pallet |





A6 MAXI VIEW

A6 MAXI

A5

DL

A4



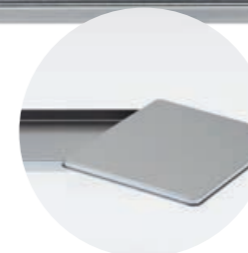
DL EAN 4260699060396

| | |
|--------------------------|-------------------|
| Item number | DL |
| Dimensions | 225 x 115 x 10 mm |
| Weight | 130g |
| Capacity | 260 ml |
| Material | tinplate |
| Pieces per unit Pallet | 50 2500 |



A6 EAN 4260699060365

| | |
|--------------------------|-------------------|
| Item number | A6 |
| Dimensions | 155 x 115 x 10 mm |
| Weight | 85g |
| Capacity | 180 ml |
| Material | tinplate |
| Pieces per unit Pallet | 100 5600 |



A5 EAN 4260699060341

| | |
|--------------------------|-------------------|
| Item number | A5 |
| Dimensions | 215 x 155 x 13 mm |
| Weight | 155g |
| Capacity | 430 ml |
| Material | tinplate |
| Pieces per unit Pallet | 40 2000 |



A4 EAN 4260699060310

| | |
|--------------------------|-------------------|
| Item number | A4 |
| Dimensions | 310 x 220 x 25 mm |
| Weight | 395g |
| Capacity | 1700 ml |
| Material | tinplate |
| Pieces per unit Pallet | 20 600 |



ALUMINIUMBOXES



Soap dishes
with screw lid, drip
tray, and optional
EPE liner



DOSEPLUS
TINPLATE PACKAGING



• DSS 050

EAN 4260699062345

new

| | |
|--------------------------|------------|
| Item number | DSS 050 |
| Dimensions | 68 × 35 mm |
| Weight | 20 g |
| Capacity | 120 ml |
| Material | aluminium |
| Pieces per unit Pallet | 100 6000 |



• DSS 055

EAN 4260699062352

new

| | |
|--------------------------|------------|
| Item number | DSS 055 |
| Dimensions | 80 × 38 mm |
| Weight | 20 g |
| Capacity | 190 ml |
| Material | aluminium |
| Pieces per unit Pallet | 96 3456 |



• DSS 060

EAN 4260699062369

rust-free

new

| | |
|--------------------------|------------|
| Item number | DSS 060 |
| Dimensions | 90 × 45 mm |
| Weight | 20 g |
| Capacity | 270 ml |
| Material | aluminium |
| Pieces per unit Pallet | 96 3456 |

SQUARE BOXES
RECTANGULAR BOXES
ROUND BOXES
COFFEE TINS
PAPER SIZE BOXES
› ALUMINIUM BOXES
VOUCHER BOXES
MEDIA BOXES





■ **DSS 005**

EAN 4260699061751

| | |
|--------------------------|-----------------|
| Item number | DSS 005 |
| Dimensions | 61 × 45 × 22 mm |
| Weight | 10g |
| Capacity | 50 ml |
| Material | aluminium |
| Pieces per unit Pallet | 100 12000 |

■ **DSS 010**

EAN 4260699061768

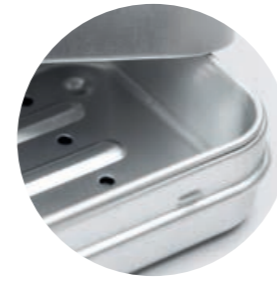
| | |
|--------------------------|-----------------|
| Item number | DSS 010 |
| Dimensions | 72 × 53 × 24 mm |
| Weight | 10g |
| Capacity | 85 ml |
| Material | aluminium |
| Pieces per unit Pallet | 100 8400 |

■ **DSS 015**

EAN 4260699061089

| | |
|--------------------------|-----------------|
| Item number | DSS 015 |
| Dimensions | 95 × 65 × 25 mm |
| Weight | 20g |
| Capacity | 150 ml |
| Material | aluminium |
| Pieces per unit Pallet | 100 4000 |

Soap dishes



new

■ **DSS 025**

EAN 4260699062376

| | |
|--------------------------|------------------|
| Item number | DSS 025 |
| Dimensions | 100 × 70 × 35 mm |
| Weight | 20g |
| Capacity | 245 ml |
| Material | aluminium |
| Pieces per unit Pallet | 100 6000 |



rust-free

Soap dishes with dip tray



■ **DSS 020**

EAN 4260699062222

| | |
|--------------------------|------------------|
| Item number | DSS 020 |
| Dimensions | 100 × 70 × 35 mm |
| Weight | 20g |
| Capacity | 245 ml |
| Material | aluminium |
| Pieces per unit Pallet | 100 6000 |



Fast delivery.



DSS 005

DSS 020

DSS 015



Cosmetic jars

rust-free

Our tins are covered with safe food laquer.

DOSEPLUS
TINPLATE PACKAGING

• DRA38.102

EAN 4260699061119

| | |
|--------------------------|-------------|
| Item number | DRA 38.102 |
| Dimensions | 38 x 102 mm |
| Weight | 18g |
| Capacity | 135 ml |
| Material | aluminium |
| Pieces per unit Pallet | 128 6144 |

• DRA46.31

EAN 4260699061102

| | |
|--------------------------|-------------|
| Item number | DRA 46.31 |
| Dimensions | 46 x 31 mm |
| Weight | 10g |
| Capacity | 50 ml |
| Material | aluminium |
| Pieces per unit Pallet | 147 13230 |

• DRA47.15

EAN 4260699061096

| | |
|--------------------------|-------------|
| Item number | DRA 47.15 |
| Dimensions | 47 x 15 mm |
| Weight | 10g |
| Capacity | 30 ml |
| Material | aluminium |
| Pieces per unit Pallet | 196 17640 |

• DRA60.45

EAN 4260699061126

| | |
|--------------------------|------------|
| Item number | DRA 60.45 |
| Dimensions | 60 x 45 mm |
| Weight | 15g |
| Capacity | 80 ml |
| Material | aluminium |
| Pieces per unit Pallet | 108 3240 |

• DRA05.10

EAN 4260699061072

| | |
|--------------------------|------------|
| Item number | DRA 05.10 |
| Dimensions | 64 x 33 mm |
| Weight | 15g |
| Capacity | 100 ml |
| Material | aluminium |
| Pieces per unit Pallet | 100 4800 |

• DRA68.85

EAN 4260699062215

| | |
|--------------------------|------------|
| Item number | DRA 68.85 |
| Dimensions | 68 x 85 mm |
| Weight | 10g |
| Capacity | 250 ml |
| Material | aluminium |
| Pieces per unit Pallet | 100 3000 |

• DRA72.32

EAN 4260699061133

| | |
|--------------------------|------------|
| Item number | DRA 72.32 |
| Dimensions | 72 x 32 mm |
| Weight | 15g |
| Capacity | 130 ml |
| Material | aluminium |
| Pieces per unit Pallet | 100 3000 |



DRA 72.32



• DRA75.60

EAN 4260699062079

| | |
|--------------------------|------------|
| Item number | DRA 75.60 |
| Dimensions | 75 x 60 mm |
| Weight | 22g |
| Capacity | 200 ml |
| Material | aluminium |
| Pieces per unit Pallet | 100 3600 |



• DRA80.27

EAN 4260699061140

| | |
|--------------------------|------------|
| Item number | DRA 80.27 |
| Dimensions | 80 x 27 mm |
| Weight | 18g |
| Capacity | 125 ml |
| Material | aluminium |
| Pieces per unit Pallet | 112 5376 |



• DRA85.35

EAN 4260699062208

| | |
|--------------------------|------------|
| Item number | DRA 85.35 |
| Dimensions | 85 x 35 mm |
| Weight | 18g |
| Capacity | 150 ml |
| Material | aluminium |
| Pieces per unit Pallet | 112 5376 |



• DRA100.35

EAN 4260699062086

| | |
|--------------------------|-------------|
| Item number | DRA 100.35 |
| Dimensions | 100 x 35 mm |
| Weight | 26g |
| Capacity | 250 ml |
| Material | aluminium |
| Pieces per unit Pallet | 90 2160 |

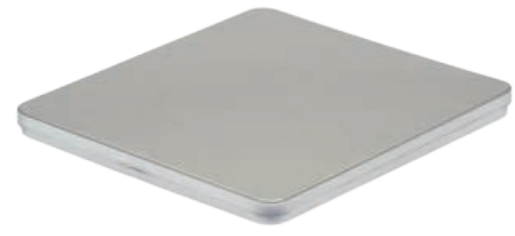


VOUCHER BOXES



■ MDT 005
MDT 006 {red}

EAN 4260699061416
EAN 4260699061423



| | |
|---------------------------------|-----------------------|
| Item number | MDT 005 MDT 006 |
| Dimensions | 140 x 125 x 10 mm |
| Weight | 90 g |
| Capacity | 175 ml |
| Material | tinplate, velour tray |
| Pieces per unit Pallet | 105 4200 |



● MDT 010
MDT 011 {red}

EAN 4260699061430
EAN 4260699061447



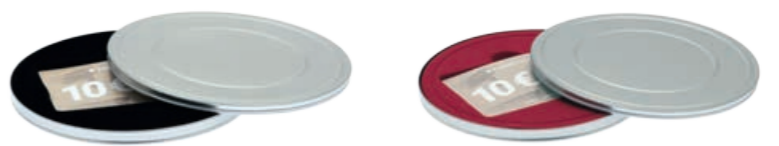
| | |
|---------------------------------|-----------------------|
| Item number | MDT 010 MDT 011 |
| Dimensions | 123 x 10 mm |
| Weight | 60 g |
| Capacity | 120 ml |
| Material | tinplate, velour tray |
| Pieces per unit Pallet | 105 3150 |



fits standard
credit card
size

● MDT 020
MDT 021 {red}

EAN 4260699061454
EAN 4260699061461



| | |
|---------------------------------|-----------------------|
| Item number | MDT 020 MDT 021 |
| Dimensions | 123 x 10 mm |
| Weight | 60 g |
| Capacity | 120 ml |
| Material | tinplate, velour tray |
| Pieces per unit Pallet | 105 3150 |



- SQUARE BOXES
- RECTANGULAR BOXES
- ROUND BOXES
- COFFEE TINS
- PAPER SIZE BOXES
- ALUMINIUM BOXES
- VOUCHER BOXES
- MEDIA BOXES

fits standard
credit card
size



■ MDT A6 MAXI

EAN 4260699061508

■ MDT A6V

EAN 4260699061492

■ MDT A5

EAN 4260699061478

■ MDT A5V

EAN 4260699061485

■ MDT DL

EAN 4260699061515

■ MDT DLV

EAN 4260699062154

Item number
Dimensions
Weight
Capacity
Material
Pieces per unit | Pallet

MDT A6 MAXI
162 × 112 × 20 mm
100 g
360 ml
tinplate, velour tray
80 | 2800

MDT A6V
162 × 112 × 20 mm
105 g
360 ml
tinplate, PET, velour tray
80 | 2800

MDT A5
215 × 155 × 13 mm
160 g
430 ml
tinplate, velour tray
40 | 2000

MDT A5V
215 × 155 × 13 mm
135 g
430 ml
tinplate, PET, velour tray
40 | 2000

MDT DL
225 × 115 × 10 mm
130 g
260 ml
tinplate, velour tray
50 | 2500

MDT DLV
225 × 115 × 10 mm
115 g
260 ml
tinplate, PET, velour tray
50 | 2500



■ MDD 010

EAN 4260699061539

| | |
|--------------------------|-----------------------|
| Item number | MDD 010 |
| Dimensions | 190 × 135 × 18 mm |
| Weight | 140g |
| Capacity | 460 ml |
| Material | tinplate, velour tray |
| Pieces per unit Pallet | 80 1920 |



■ MDD 011

EAN 4260699061546

| | |
|--------------------------|-----------------------|
| Item number | MDD 011 |
| Dimensions | 190 × 135 × 18 mm |
| Weight | 140g |
| Capacity | 460 ml |
| Material | tinplate, velour tray |
| Pieces per unit Pallet | 80 1920 |



■ MDS 015

EAN 4260699061591

| | |
|--------------------------|-------------------|
| Item number | MDS 015 |
| Dimensions | 190 × 135 × 18 mm |
| Weight | 125g |
| Capacity | 460 ml |
| Material | tinplate, PET |
| Pieces per unit Pallet | 80 2400 |



MEDIA BOXES

- SQUARE BOXES
- RECTANGULAR BOXES
- ROUND BOXES
- COFFEE TINS
- PAPER SIZE BOXES
- ALUMINIUM BOXES
- VOUCHER BOXES
- > MEDIA BOXES





USB 010

MDE 005

MDS 015



■ **USB 010**

EAN 4260699061676

| | |
|--------------------------|------------------------|
| Item number | USB 010 |
| Dimensions | 115 × 85 × 22 mm |
| Weight | 60 g |
| Capacity | 215 ml |
| Material | tinplate, PET, PU foam |
| Pieces per unit Pallet | 100 6000 |



■ **SDK 005**

EAN 4260699061652

| | |
|--------------------------|----------------------------|
| Item number | SDK 005 |
| Dimensions | 86 × 58 × 17 mm |
| Weight | 30 g |
| Capacity | 85 ml |
| Material | tinplate, PET, velour tray |
| Pieces per unit Pallet | 100 8000 |



■ **MDE 005**

EAN 4260699061553

| | |
|--------------------------|-----------------------|
| Item number | MDE 005 |
| Dimensions | 140 × 125 × 10 mm |
| Weight | 90 g |
| Capacity | 175 ml |
| Material | tinplate, velour tray |
| Pieces per unit Pallet | 105 5040 |



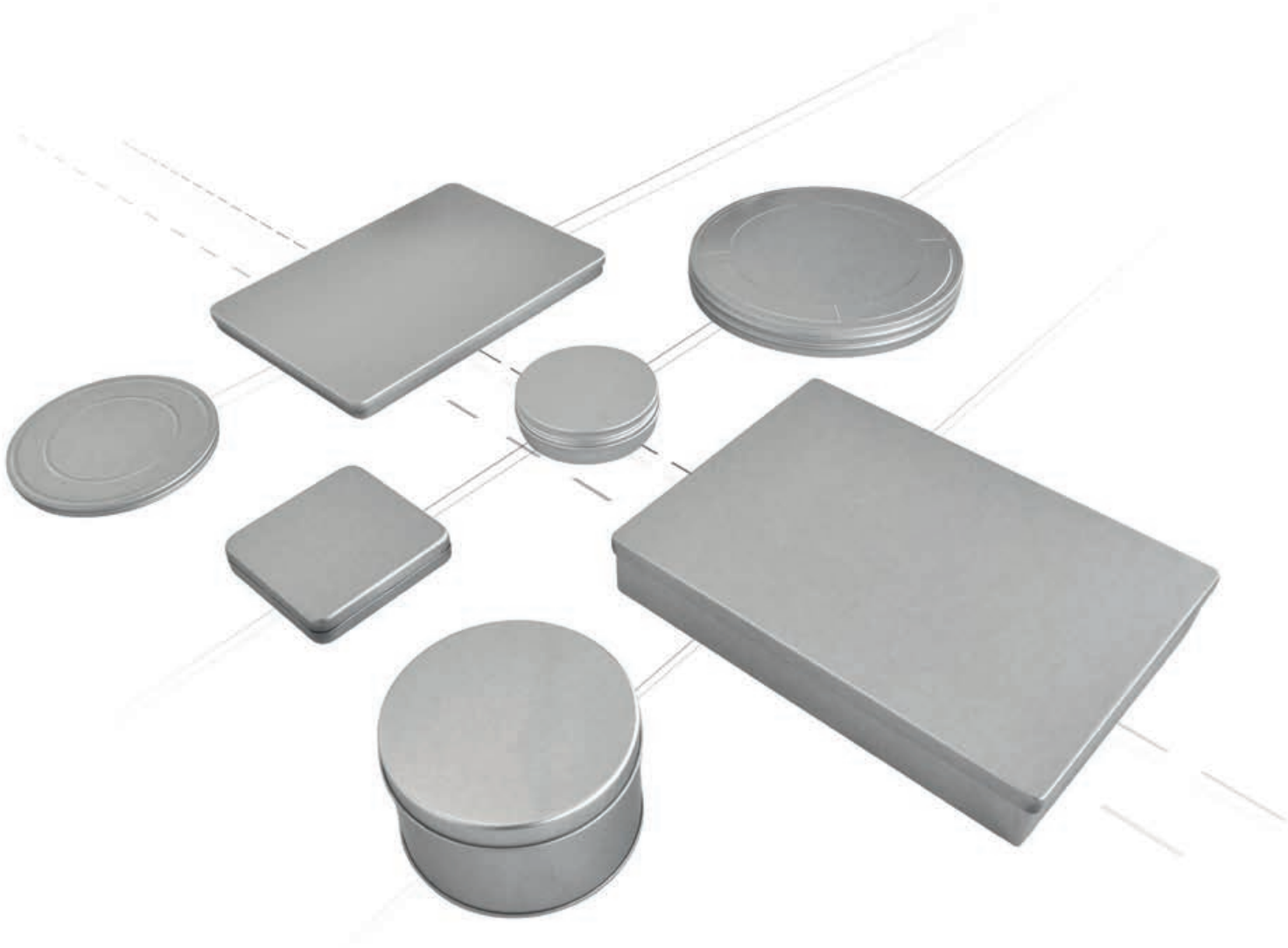
DOSEPLUS

TINPLATE PACKAGING

P R I N T
E N G R A V E
E M B O S S

Perfection in Every Detail: Tins and More!

We don't just offer high-quality tins – we also provide extensive finishing techniques. Whether it's **custom assembly**, embossing, printing, or laser engraving, we make your products truly unique. **All from a single source for a flawless result.**



DOSEPLUS

TINPLATE PACKAGING

CONTACT US IN
GERMANY & WORLDWIDE
+49 (0) 3621 733 800

Dosenspezialist GmbH
Schwabhäuser Str. 29 & 31
99867 Gotha
Germany

info@doseplus.com
www.doseplus.com